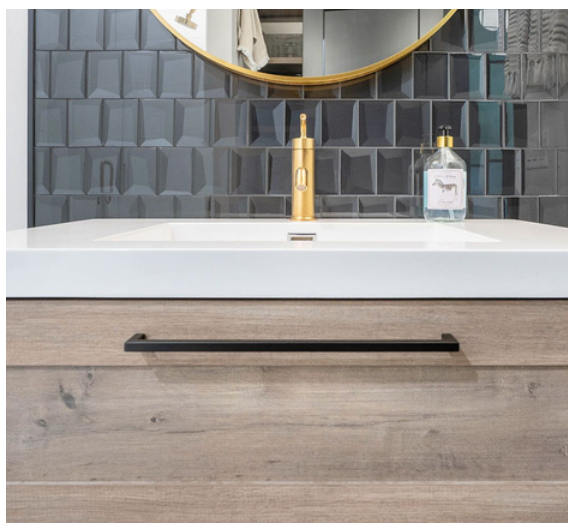


# QUICK SHIP DECORATIVE HARDWARE CATALOG



Knobs | Pulls | Cup Pulls | Edge Pulls | & more!



**DIRECT**  
SUPPLY INC  
SURFACE MATERIALS \ CABINETRY \ HARDWARE

1055 36th Street SE, Grand Rapids, MI 49508  
[www.directsupplyinc.com](http://www.directsupplyinc.com) | P: 616-245-4415 | [sales@directsupplyinc.com](mailto:sales@directsupplyinc.com)

# QUICK SHIP DECORATIVE HARDWARE

## Manhattan Collection



**96MM C\C**  
 P-92926-10B  
 P-92926-BK  
 P-92926-DP  
 P-92926-PC  
 P-92926-RG  
 P-92926-SN



**128MM C\C**  
 P-92927-10B  
 P-92927-BK  
 P-92927-DP  
 P-92927-PC  
 P-92927-RG  
 P-92927-SN



**160MM C\C**  
 P-92928-10B  
 P-92928-BK  
 P-92928-DP  
 P-92928-PC  
 P-92928-RG  
 P-92928-SN



**ADA FRIENDLY** ✓  
**32MM**  
 K-1218-10B  
 K-1218-BK  
 K-1218-DP  
 K-1218-PC  
 K-1218-RG  
 K-1218-SN



**AMERICANS WITH DISABILITIES ACT**

**ADA – Friendly**  
 Many of the decorative pulls offered by Pride are designed with accessibility and ergonomics in mind. Collections that carry the ADA-Friendly designation feature the clearance necessary, based on the Dreyfus Human Factor Scale, to accommodate the hand of an average man. Our ADA-Friendly pulls are shaped for ease of grip and don't require tight grasping, pinching or twisting, as prescribed in Section 309.4 of the ADA Accessibility Guidelines (ADAAG)

\*\*Matching appliance handles are available to order.

### Finish Codes

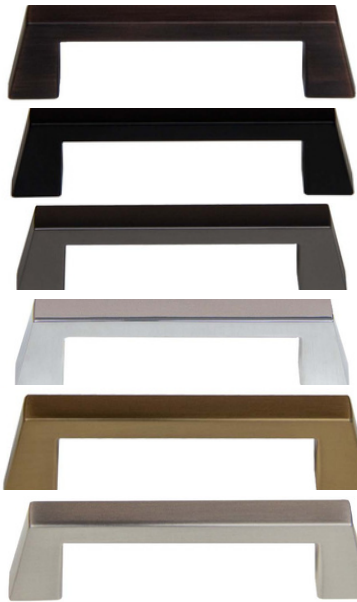
10B Oil Brushed Bronze | BK Matte Black | DP Dark Pewter  
 PC Polished Chrome | RG Radiant Gold | SN Satin Nickel

Finish and size pictured may vary, see actual sample.

\*\*See individual items for finishes available

# QUICK SHIP DECORATIVE HARDWARE

## Colorado Collection



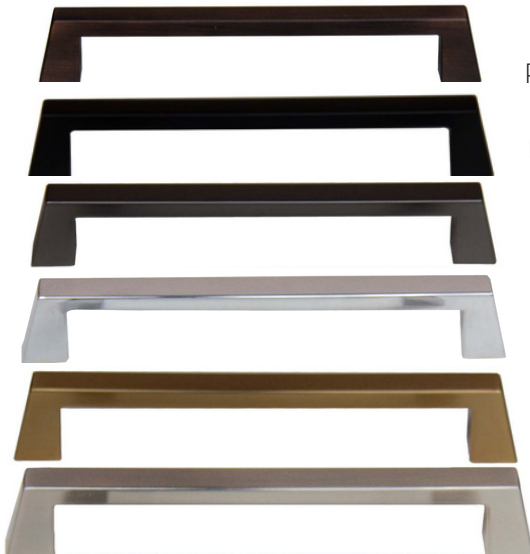
### 96MM C\C

- P-92836-10B
- P-92836-BK
- P-92836-DP
- P-92836-PC
- P-92836-RG
- P-92836-SN



### 128MM C\C

- P-92837-10B
- P-92837-BK
- P-92837-DP
- P-92837-PC
- P-92837-RG
- P-92837-SN



### 160MM C\C

- P-92838-10B
- P-92838-BK
- P-92838-DP
- P-92838-PC
- P-92838-RG
- P-92838-SN

\*\*Matching appliance handles are available to order.



### 30MM

- K-94723-10B
- K-94723-BK
- K-94723-DP
- K-94723-PC
- K-94723-RG
- K-94723-SN

### 32MM

- K-92925-10B
- K-92925-BK
- K-92925-DP
- K-92925-PC
- K-92925-RG
- K-92925-SN



## Finish Codes

10B Oil Brushed Bronze | BK Matte Black | DP Dark Pewter  
 PC Polished Chrome | RG Radiant Gold | SN Satin Nickel

Finish and size pictured may vary, see actual sample.

\*\*See individual items for finishes available

# QUICK SHIP DECORATIVE HARDWARE

## Miami Collection Edge Pulls

### Pointed Nose

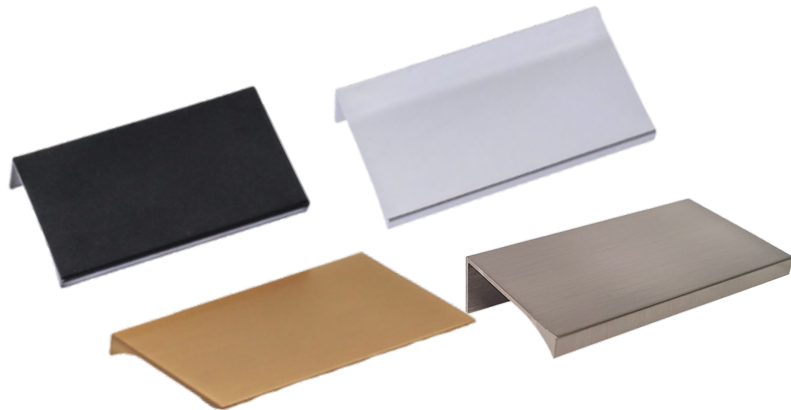
#### 112MM C/C - 152MM O/L

- P-1806-BK
- P-1806-PC
- P-1806-SG
- P-1806-SN



#### 46MM C/C - 76MM O/L

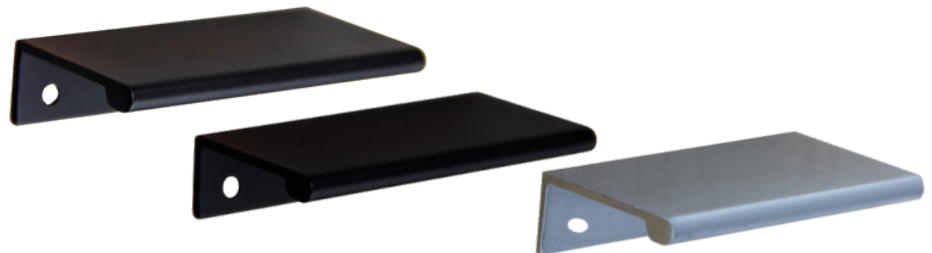
- P-1803-BK
- P-1803-PC
- P-1803-SG
- P-1803-SN



### Rounded Nose

#### 60MM C/C - 76MM O/L

- P-1876-10B
- P-1876-BK
- P-1876-SN



#### 33MM C/C - 37MM O/L

- P-80014-10B
- P-80014-BK
- P-80014-SN



### Finish Codes

10B Oil Brushed Bronze | BK Matte Black |  
PC Polished Chrome | SG Satin Gold | SN Satin Nickel

Finish and size pictured may vary, see actual sample.

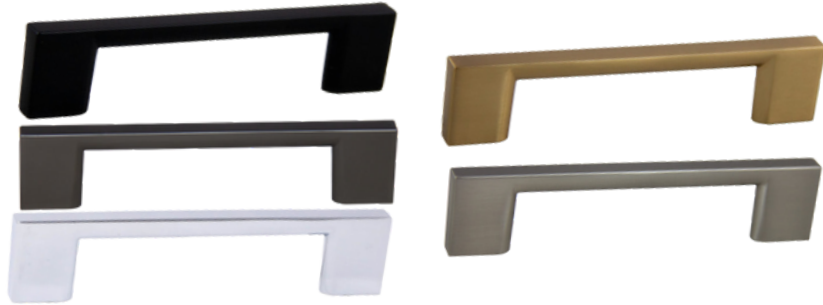
\*\*See individual items for finishes available

# QUICK SHIP DECORATIVE HARDWARE

## Miami Collection

### 96MM C/C - 120MM O/L

- P-80572-BK
- P-80572-DP
- P-80572-PC
- P-80572-RG
- P-80572-SN



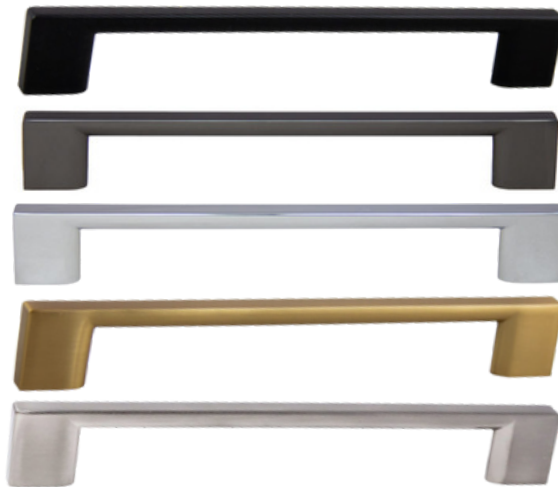
### 128MM C/C - 149MM O/L

- P-81572-BK
- P-81572-DP
- P-81572-PC
- P-81572-RG
- P-81572-SN



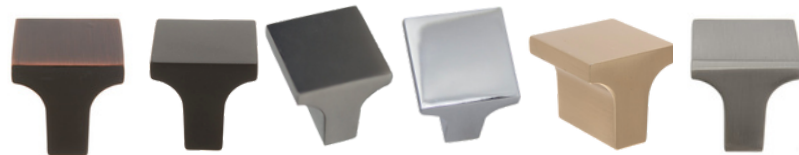
### 160MM C/C - 190MM O/L

- P-83572-BK
- P-83572-DP
- P-83572-PC
- P-83572-RG
- P-83572-SN



### 25.4MM

- K-83125-10B
- K-83125-BK
- K-83125-DP
- K-83125-PC
- K-83125-RG
- K-83125-SN



\*\*Matching appliance handles are available to order.

## Finish Codes

10B Oil Brushed Bronze | BK Matte Black | DP Dark Pewter  
PC Polished Chrome | RG Radiant Gold | SN Satin Nickel

Finish and size pictured may vary, see actual sample.

\*\*See individual items for finishes available

# QUICK SHIP DECORATIVE HARDWARE

## Round Bar Pull Collection

**2" O/L**  
(50.8mm)  
K-102-10B  
K-102-BK  
K-102-PC  
K-102-RG  
K-102-SN



**2.51" C/C**  
(64MM)  
**4" O/L**  
(101.6mm)  
P-104-BK  
P-104-PC  
P-104-RG  
P-104-SN

**3" C/C**  
(76.2mm)  
**6" O/L**  
(152.4mm)  
P-106-10B  
P-106-BK  
P-106-DP  
P-106-PC  
P-106-RG  
P-106-SN

**3.77" C/C**  
(96MM)  
**6" O/L**  
(152.4mm)  
P-1096-10B  
P-1096-BK  
P-1096-DP  
P-1096-PC  
P-1096-RG  
P-1096-SN

**5" C/C**  
(127mm)  
**8" O/L**  
(203mm)  
P-108-10B  
P-108-BK  
P-108-DP  
P-108-PC  
P-108-RG  
P-108-SN

**4.63" C/C**  
(177.8mm)  
**10" O/L**  
(254mm)  
P-110-10B  
P-110-BK  
P-110-DP  
P-110-PC  
P-110-RG  
P-110-SN

**9" C/C**  
(228.6MM)  
**12" O/L**  
(304.8mm)  
P-112-10B  
P-112-BK  
P-112-PC  
P-112-RG  
P-112-SN

The following sizes are available as a special order. Broken box fee may apply.

14" (355.6mm) 22" (558.8mm)  
16" (406.4mm) 24" (609.6mm)  
18" (457.2mm) 26" (660.4mm)  
20" (508mm) 28" (711.2mm)

\*\*Matching appliance handles are available to order.



### Finish Codes

10B Oil Brushed Bronze | BK Matte Black | DP Dark Pewter  
PC Polished Chrome | RG Radiant Gold | SN Satin Nickel

Finish and size pictured may vary, see actual sample.

\*\*See individual items for finishes available

# QUICK SHIP DECORATIVE HARDWARE

## Traditional Collection

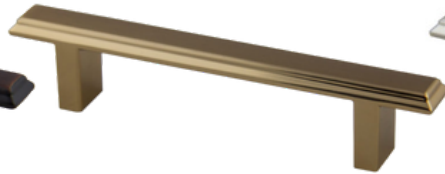
**96MM C/C - 136 MM O/L**

P-91296-10B  
P-91296-RG  
P-91296-SN



**128MM C/C - 168MM O/L**

P-91297-10B  
P-91297-RG  
P-91297-SN



**160MM C/C - 200MM O/L**

P-91298-10B  
P-91298-RG  
P-91298-SN



**96MM C/C - 133MM O/L**

P-91496-10B  
P-91496-SN



**128MM C/C - 165MM O/L**

P-91497-10B  
P-91497-SN



**160MM C/C - 195MM O/L**

P-91498-10B  
P-91498-SN



**33.6MM**

K-91090-10B  
K-91090-RG  
K-91090-SN

**28MM**

K-92230-10B  
K-92230-BK  
K-92230-DP  
K-92230-PC  
K-92230-RG  
K-92230-SN



**28MM\*36MM**

K-92430-10B  
K-92430-BK  
K-92430-DP  
K-92430-PC  
K-92430-RG  
K-92430-SN



### Finish Codes

10B Oil Brushed Bronze | BK Matte Black | DP Dark Pewter  
PC Polished Chrome | RG Radiant Gold | SN Satin Nickel

Finish and size pictured may vary, see actual sample.

\*\*See individual items for finishes available

# QUICK SHIP DECORATIVE HARDWARE

## Square Pull Collection



96MM C/C

- P-87226-10B
- P-87226-BK
- P-87226-DP
- P-87226-PC
- P-87226-RG
- P-87226-SN



128MM C/C

- P-87227-10B
- P-87227-BK
- P-87227-DP
- P-87227-PC
- P-87227-RG
- P-87227-SN



160MM C/C

- P-87228-10B
- P-87228-BK
- P-87228-DP
- P-87228-PC
- P-87228-RG
- P-87228-SN



192MM C/C

- P-87229-10B
- P-87229-BK
- P-87229-DP
- P-87229-PC
- P-87229-RG
- P-87229-SN



224MM C/C

- P-87300-10B
- P-87300-BK
- P-87300-SN



### AMERICANS WITH DISABILITIES ACT

#### ADA – Friendly

Many of the decorative pulls offered by Pride are designed with accessibility and ergonomics in mind. Collections that carry the ADA-Friendly designation feature the clearance necessary, based on the Dreyfus Human Factor Scale, to accommodate the hand of an average man. Our ADA-Friendly pulls are shaped for ease of grip and don't require tight grasping, pinching or twisting, as prescribed in Section 309.4 of the ADA Accessibility Guidelines (ADAAG)

\*\*Matching appliance handles are available to order.

30MM

- K-94723-10B
- K-94723-BK
- K-94723-DP
- K-94723-PC
- K-94723-RG
- K-94723-SN



### Finish Codes

10B Oil Brushed Bronze | BK Matte Black | DP Dark Pewter  
 PC Polished Chrome | RG Radiant Gold | SN Satin Nickel  
 Finish and size pictured may vary, see actual sample.

\*\*See individual items for finishes available



# QUICK SHIP DECORATIVE HARDWARE

## Transitional Collection

**ADA** ✓  
FRIENDLY

**96MM C/C**

P-81092-10B  
P-81092-BK  
P-81092-PC  
P-81092-RG  
P-81092-SN

**ADA** ✓  
FRIENDLY

**128MM C/C**

P-82092-10B  
P-82092-BK  
P-82092-PC  
P-82092-RG  
P-82092-SN

**ADA** ✓  
FRIENDLY

**160MM C/C**

P-83092-10B  
P-83092-BK  
P-83092-PC  
P-83092-RG  
P-83092-SN

**ADA** ✓  
FRIENDLY

**96MM C/C**

P-86373-10B  
P-86373-BK  
P-86373-DP  
P-86373-PC  
P-86373-RG  
P-86373-SN

**ADA** ✓  
FRIENDLY

**128MM C/C**

P-86374-10B  
P-86374-BK  
P-86374-DP  
P-86374-PC  
P-86374-RG  
P-86374-SN

**ADA** ✓  
FRIENDLY

**160MM C/C**

P-86375-10B  
P-86375-BK  
P-86375-DP  
P-86375-PC  
P-86375-RG  
P-86375-SN



**ADA** ✓  
FRIENDLY

**32MM**

K-1218-10B  
K-1218-BK  
K-1218-DP  
K-1218-PC  
K-1218-RG  
K-1218-SN



\*\*Matching appliance handles are available to order.

**32MM**

K-81091-10B  
K-81091-BK  
K-81091-PC  
K-81091-RG  
K-81091-SN



**ADA** ✓  
FRIENDLY

### AMERICANS WITH DISABILITIES ACT

#### ADA - Friendly

Many of the decorative pulls offered by Pride are designed with accessibility and ergonomics in mind. Collections that carry the ADA-Friendly designation feature the clearance necessary, based on the Dreyfus Human Factor Scale, to accommodate the hand of an average man. Our ADA-Friendly pulls are shaped for ease of grip and don't require tight grasping, pinching or twisting, as prescribed in Section 309.4 of the ADA Accessibility Guidelines (ADAAG)

### Finish Codes

10B Oil Brushed Bronze | BK Matte Black | DP Dark Pewter  
PC Polished Chrome | RG Radiant Gold | SN Satin Nickel

Finish and size pictured may vary, see actual sample.

\*\*See individual items for finishes available

# QUICK SHIP DECORATIVE HARDWARE

## Transitional Collection

### 96MM C/C

P-82234-10B  
P-82234-BK  
P-82234-PC  
P-82234-SN

### 128MM C/C

P-82034-10B  
P-82034-BK  
P-82034-PC  
P-82034-SN

### 160MM C/C

P-81235-10B  
P-81235-BK  
P-81235-PC  
P-81235-SN



### 30MM

K-910-10B  
K-910-BK  
K-910-DP  
K-910-PC  
K-910-RG  
K-910-SN



### 96MM C/C

P-87215-10B  
P-87215-BK  
P-87215-PC  
P-87215-SN

### 128MM C/C

P-87216-10B  
P-87216-BK  
P-87216-PC  
P-87216-SN

### 160MM C/C

P-87218-10B  
P-87218-BK  
P-87218-PC  
P-87218-SN



### 35MM

K-971-10B  
K-971-BK  
K-971-PC  
K-971-RG  
K-971-SN



## Finish Codes

10B Oil Brushed Bronze | BK Matte Black | DP Dark Pewter  
PC Polished Chrome | RG Radiant Gold | SN Satin Nickel

Finish and size pictured may vary, see actual sample.

\*\*See individual items for finishes available

# QUICK SHIP DECORATIVE HARDWARE

## Radiant Gold Collection

**96MM C/C**  
P-81456-RG



**128MM C/C**  
P-81458-RG

**96MM C/C**  
P-86373-RG



**128MM C/C**  
P-86374-RG

**160MM C/C**  
P-86375-RG

**128MM C/C**  
P-86718-RG



**96MM C/C**  
P-81092-RG

**128MM C/C**  
P-82092-RG

**160MM C/C**  
P-83092-RG

**128MM C/C**  
P-21768-RG



**65MM**  
K-86618-RG



**35MM**  
K-971-RG



**32MM**  
K-1218-RG



**32MM**  
K-81091-RG



**30MM**  
K-910-RG



**3"**  
**76.2MM C/C - 82.55MM O/L**  
P-953-RG



**3"**  
**76.2MM C/C - 88.9MM O/L**  
P-82981-RG



**3"**  
**76.2MM C/C - 107.95MM O/L**  
P-80753-RG

### Finish Codes RG Radiant Gold

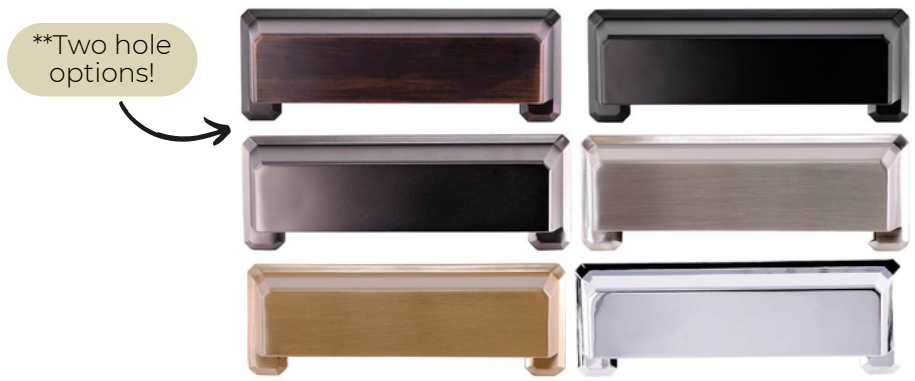
Finish and size pictured may vary, see actual sample.

\*\*See individual items for finishes available

# QUICK SHIP DECORATIVE HARDWARE

## Coordinating Cup Pulls & Knobs

**3" C/C**  
(76.2mm) or  
**96MM C/C**  
P-90396-10B  
P-90396-BK  
P-90396-DP  
P-90396-PC  
P-90396-RG  
P-90396-SN



**3"**  
**76.2MM C/C - 82.55MM O/L**  
P-953-10B  
P-953-BK  
P-953-PC  
P-953-RG  
P-953-SN



**3"**  
**76.2MM C/C - 107.95MM O\L**  
P-80753-10B  
P-80753-BK  
P-80753-PC  
P-80753-RG  
P-80753-SN



**3"**  
**76.2MM C/C - 88.9MM O/L**  
P-82981-10B  
P-82981-BK  
P-82981-DP  
P-82981-PC  
P-82981-RG  
P-82981-SN



**31MM**  
K-81361-10B  
K-81361-BK  
K-81361-PC  
K-81361-RG  
K-81361-SN



### Finish Codes

10B Oil Brushed Bronze | BK Matte Black | DP Dark Pewter  
PC Polished Chrome | RG Radiant Gold | SN Satin Nickel

Finish and size pictured may vary, see actual sample.

\*\*See individual items for finishes available